

**ASTLEY'S ASTOUNDING
ADVENTURES
ACCESS PACK**



Welcome to the New Vic

We want all our audiences at the New Vic to feel very welcome and valued. We run relaxed performances to ensure we are extending that welcome to audiences who perhaps find other performances more complex to access. The relaxed performance is particularly useful for children, young people and adults who are neurodivergent and/or have other specific learning disabilities. It is also more accessible for families who might need to move around more or who would value more space in the auditorium. This pack is designed to help support your trip to the theatre, let you know what to expect when you arrive and what the performance will be like. We really look forward to welcoming you to the theatre and the show.



What is a Relaxed Performance?

Relaxed performances are an opportunity for audiences to enjoy a show when the theatre and auditorium rules are eased. Making it a more inviting environment for all.

What differences can audiences expect?

The show will take an informal/casual approach when it comes to sounds, noise and movement made by audience which includes allowing audiences exiting and entering freely no matter the reason.



What are the adaptations?

- *Latecomer and re-admittance points will be relaxed to allow people to leave and re-enter the auditorium more freely.*
- *The Front of House team are briefed on providing a more informal service,*
- *The house lights will remain slightly raised to during the performance to ensure your safety if you need to move about.*
- *There will be staff members at the exits so if you need to leave/re-enter during the performance you can do easily. They are also there ready to help you if you require it.*
- *The performers are briefed about relaxed performances and know that you may need to move around and make noise.*
- *A quiet chill out space is provided with comfortable seating.*
- *This production is suitable for babes in arms,*

PHILIP ASTLEY

ASTLEY'S ASTOUNDING ADVENTURES TELLS THE STORY OF LOCAL HERO AND INVENTOR OF THE MODERN CIRCUS, PHILIP ASTLEY.

ASTLEY WAS BORN ON 8 JANUARY 1742, THE SON OF CARPENTER EDWARD ASTLEY AND SARAH LEECH AND SPENT HIS EARLY LIFE IN NEWCASTLE-UNDER-LYME.

ASTLEY IS CREDITED WITH ESTABLISHING THE CIRCUS RING THAT IS USED TO THIS DAY!



THE SHOW LOOKS AT ASTLEY'S LIFE FROM WHEN ASTLEY FIRST LEFT THE ARMY AND MOVED TO LONDON TO HOW HE AND HIS WIFE PATTY OVERCAME THEIR RIVAL, MR. CHARLES HUGHES, AND HOW THEIR SON JOHN ASTLEY PROPELLED THEIR BUSINESS.

The Plot of Astley's Astounding Adventures

There is a lot that happens in the performance and so below we had added a brief description of what happens in the two acts. **There are some spoilers below** so if you want it to be a surprise then you can skip to the next page.

Act 1

- This is where we get to learn about and then meet Philip Astley, we find out about his upbringing and his time in the military. This is all important because it explains how Astley was able to do so much!
- We get to meet important characters like Patty Jones, Charles Hughes, Sir Pricklington, Billy the Horse and others. We also see how other people treat Astley and how he doesn't let judgemental people stop him from following his dreams.
- Astley performs his first trick ride and it is received well by audiences and Charles Hughes joins Astley and the team to perform and eventually move to a bigger place.
- At the end of the Act, you will see lots of different acts being performed from circus professionals to clowns, musicians and a special performance from Astley and a surprise guest!

Act 2

- The show picks up again from the same spot we left end of Act 1 and this is where we see the struggles that Astley and the team have to face, but also on how Astley over comes all of his hardships.
- We then get introduced to Philip Astley's son John Astley through a Carousel Horses performance. John is loved by audiences and becomes more popular than his dad!
- Astley comes up with a bit of a convoluted plan to put Charles Hughes out of business but that back fires. The two must win a race against time to stay open but Hughes gets the upper hand.
- Then the Astley family get an opportunity to perform in front of the King but unfortunately, John and Philip end up fighting. This leads to the building burning down and we see a real fire dance on stage.
- But don't worry, Astley gets lots of support and is able to rebuild. And to end the whole show, we get to see a special performance from the circus professional.

THE CAST

Over the next few pages you will get to meet the entire cast of 'Astley's Astounding Adventure'.

There are a lot of people you will meet on stage and our actors become lots of different characters. You will see the cast and what they will look like in the show.



Adrian Decosta plays Charles Hughes



Nicholas Shaw plays Clown 2 and other characters



Michael Hugo plays Zipper and other characters



Sui-See Hung plays Clown 1 and other characters



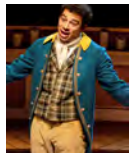
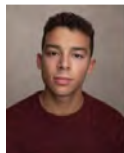
Nicholas Richardson plays Philip Astley



Danielle Bird plays Patty Jones



Gareth Cassidy plays Alfie Burrell



Darcy Braimoh plays Clown 3 and John Astley

SWINGS



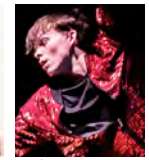
Sedona Rose

Jerone Marsh

CIRCUS PROFESSIONALS



Rafiq Ffinch-Shah



Joseph Hamilton



Lee Partridge

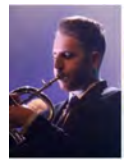


Tamzen Moulding

MUSICIANS



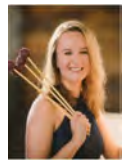
Fahaan Shah



Cameron Lockett



Miri Wallich



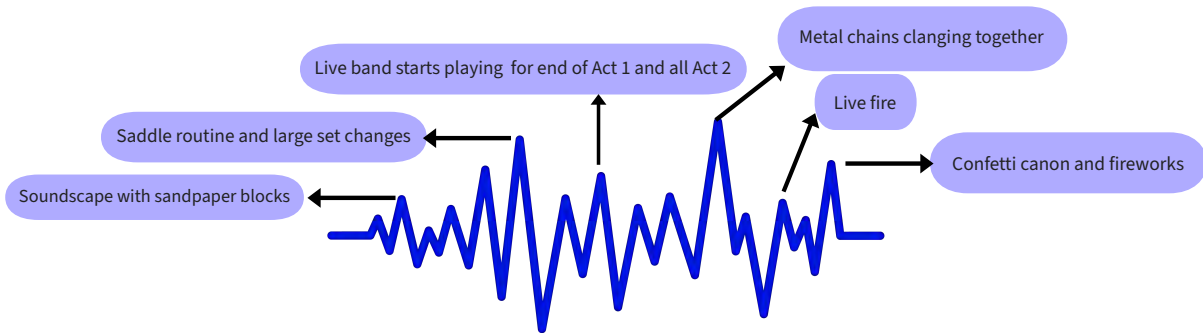
Sophie Smith



Eleanor Toms

Sonic Storyboard

Below is a sonic storyboard, which is a visual map of the show and highlights points some audience members may find over stimulating and may want to wear ear defenders or need to leave the auditorium. We encourage you to take the necessary steps needed to have a positive show experience.

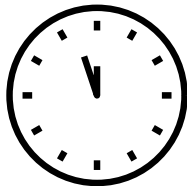


What to expect



The show is suitable for all audiences but the show does involve:

- live music
- circus
- a fire dance
- fights
- guns and swords
- audience participation



Run time of the show:

Act 1 - Aprx. 1 hour 20mins

Interval - 20mins

Act 2 - Aprx. 55mins



Astley's Astounding Adventure has a few moments where audiences may find having their own ear defenders useful



Feel free to move around, if you need to leave the auditorium you will be allowed back in. The performers will love it when you clap and make noise.

What will my theatre journey inside the theatre look like?



On the outside you will be able to see our sign outside with the shows that we have on.



When you turn in you will be able to enter to the car park or go straight to the theatre



If you needed a disabled car parking space, there are a few to choose from our car park.



When you are ready to enter the theatre, this is what the front entrance looks like



After walking through the doors this will be what you first see



If you turn to your right you will see our ticket desk. You can collect your tickets or ask our staff for help.



Past the Ticket desk you will be able to see Door 4, as well as our toilets and accessible toilets.



If you wanted to sit down, opposite the ticket desk are some sofas.

What will my theatre journey inside the theatre look like?



If you were to turn left at the entrance you would be able to see our gift shop

Past the gift shop you would be able to find the lift that will take you to the next level and another seating area for you to relax in



If you were to go upstairs, either set would take you to our restaurant

If you were to go up the right set of stairs, this would be your view

And you would be able to see the toilets and Door 2

What will my theatre journey inside the theatre look like?



If you went up the left set of stairs this would be your view and where the lift would take you from the lower level.

If you turned right from the top of the stairs you would be able to see Door 1

Walking past Door 1 you would find our bar and more seating.

Who Can I Ask Help From?

If you find your self in need of assistance in any form then look out for members of staff or trained volunteers wearing these lanyards in the picture.

The team here at the New Vic are here to help with any of your needs so please do not hesitate to speak to them. We are happy to help in any way we can.

CHILL-OUT AREAS

- If anyone wants to leave the auditorium at any time during the performance, there are quiet areas that you can visit. You can relax here if you need a little break before going back in to watch the performance.
- Ask the ushers where the quiet areas are and they will show you.



What will the theatre look like for the performance?

Now when you enter the theatre to watch Astley's Astounding Adventure this is what your view would be.



Set Design

- When you come into the theatre auditorium, the lights will be on so that you can see the stage and find your seat.
- The stage has a wooden platform and wooden covers on the stage. There are horse saddles that are hanging in the ceiling that come down and a long red silk.
- The set is made to look like Philip Astley's Amphitheater that he built himself from wood as he learnt carpentry from his father.
- The set will change as the action of the story develops and you will see the actors change the set around them and sometimes things will appear on stage as if by magic.
- Some actors will also be using swords and guns but don't be afraid because the gun doesn't work and won't be pointed at audiences and the same goes for the swords.

Lighting

- The lights in the show will change to lots of different colours and sometimes the stage will go a little darker or brighter.
- There will be a video that will be projected on the floor and goes around in a circle,

Sound

- The actors will be making a lot of sound effects or playing instruments sometimes,
- There will be professional musicians who will also become a part of the story and some will play a wide range of instruments,



Need more information

If you have any more questions or concerns that haven't been clarified here then please feel free to contact us. We will try to answer any questions you may have.

Contact us through our box office:

01782 717 962

(10.00am - 6.00pm Mon - Sat)

tickets@newvictheatre.org.uk

New Vic Theatre,
Etruria Road,
Newcastle-under-Lyme,
ST5 0JG

If you're using a satnav...

Users of satellite navigation systems have occasionally experienced problems finding us. Please ensure that your system is directing you to the NEW VIC, NEWCASTLE-UNDER-LYME. Double check that your system has logged the correct postcode - ST5 0JG

